



Designs by Christina Sherrod

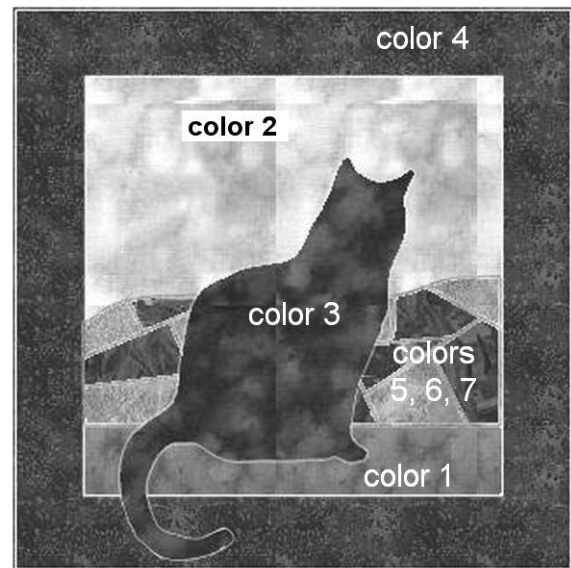
© 2008 – 2023 Christina Sherrod
SpruceAndFjell.com

Gazing Cat Crazy Quilt & Appliqué

Fabric List

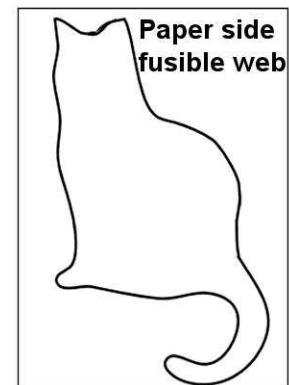
- color 1: 2.5" x 12.5"
- color 2: 10.5" x 12.5"
- color 3: 10" x 14"
- color 4: approx. 12" x 20" for borders
approx. 4" x 40" for binding
- color 5-7: approx. 4" x 22" each
- white: 5.5" x 12.5" (hills base)
- pattern

NOTE: All stitching is done with 1/4" seams



Directions

1. Create cat appliqué piece. If you plan to use fusible web to attach the cat appliqué, turn the pattern over and trace onto the paper side of the web. Use a window, light box or cut out the pattern, flip pattern over and trace around it. Image at right shows the cat pattern traced backward onto the paper side of the fusible web. Follow directions on web for ironing web to wrong side of fabric. Allow the piece to cool after ironing. Cut out cat; peel off web paper. set cat piece aside.



If you are not using fusible web, place the cat pattern onto the right side of fabric #3. Cut out the cat and set it aside.

2. Create "crazy quilt" hills. Lay down the three green

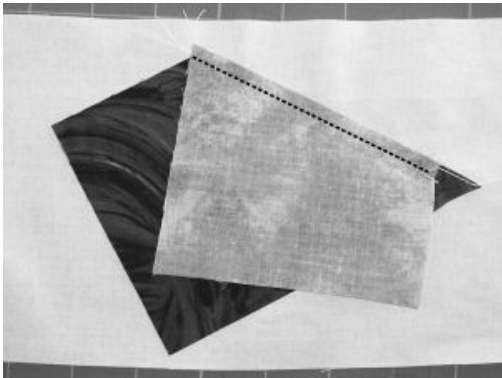


strips of fabric, right side up, in an even stack. Cut the pieces through all three layers, making random, straight cuts.

Separate all pieces. Place one piece of fabric in the center of the white piece of fabric. Baste close to one edge to hold the piece in place (or use a pin).

Place a second piece of fabric (different color), right sides together, over the first piece, and stitch along one edge (image below left). NOTE: the lengths of the edges stitched do not have to be of equal length. Press seams open.

Place third piece right sides together at a random angle on top of first two and stitch into place. Press seams open (image below right).

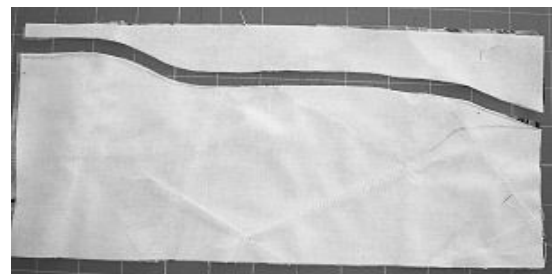


Continue until the entire white piece is covered. There are a few tricks to keep in mind. If you have a raw edge that will not get stitched into a seam, fold it under before stitching the piece on. If you have a long edge to cover, stitch two smaller pieces together first; then stitch them as a unit onto your piece (below left). Once the white fabric is totally covered, trim the edges. You should have a 5.5" x 12.5" block (below right).



finished 5.5" x 12.5" block

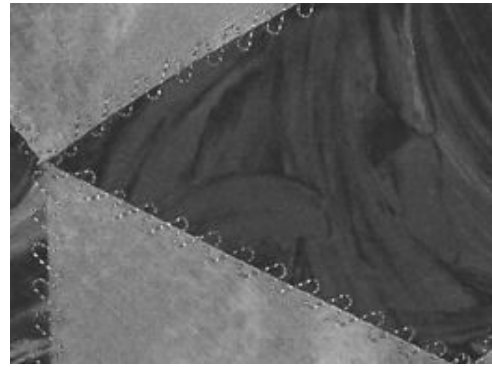
Flip block to wrong side. Measure 5" up from the bottom on the left side and make a mark with a fabric pencil. Measure 3.5" up from the bottom on the right side and mark with a fabric pencil. Draw a line between the marks to represent the "hills". Cut along your drawn line (image at right)



3. Assemble hills/sky block. Lay down the sky piece, right side up. Lay the hills piece, right side up over the sky piece, aligning side and bottom edges. Pin. Baste close to edge

along the three joined sides. The sky/hills block should measure 10.5" x 12.5" (below left).

This is the time to embellish! Or, you can wait until your piece is layered and ready for quilting. Add beads, embroidery, sequins, etc. to "dress up" the hills. This adds to the "crazy quilt" look (below right).



Embellish!

4. Stitch 12.5" x 2.5" base piece (color 1) to the base of your hills/sky block, right sides together. Press seams. Stitch a 12.5" x 2.5" piece of border fabric (color 4) to the two sides of your block. Press seams open. Stitch a piece of 13.5" x 2.5" to the top and bottom of the block. Press seams open.

5. Place the cat onto the block so that the tail falls onto the lower border. Cat sits on base piece. When you are happy with the placement, iron the cat into place (if you are using fusible web), or stitch the cat into place. I used fusible web, then outlined the cat with machine satin stitching.

Finishing Your Quilt

Layer backing, batting (or fusible fleece) and quilt top. Add binding and hanging sleeve. Cut binding fabric into 1.5" strips to create binding.

For free quilt lessons, visit our website at: SpruceAndFjell.com



© 2008-2023 Christina Sherrod
SpruceAndFjell.com